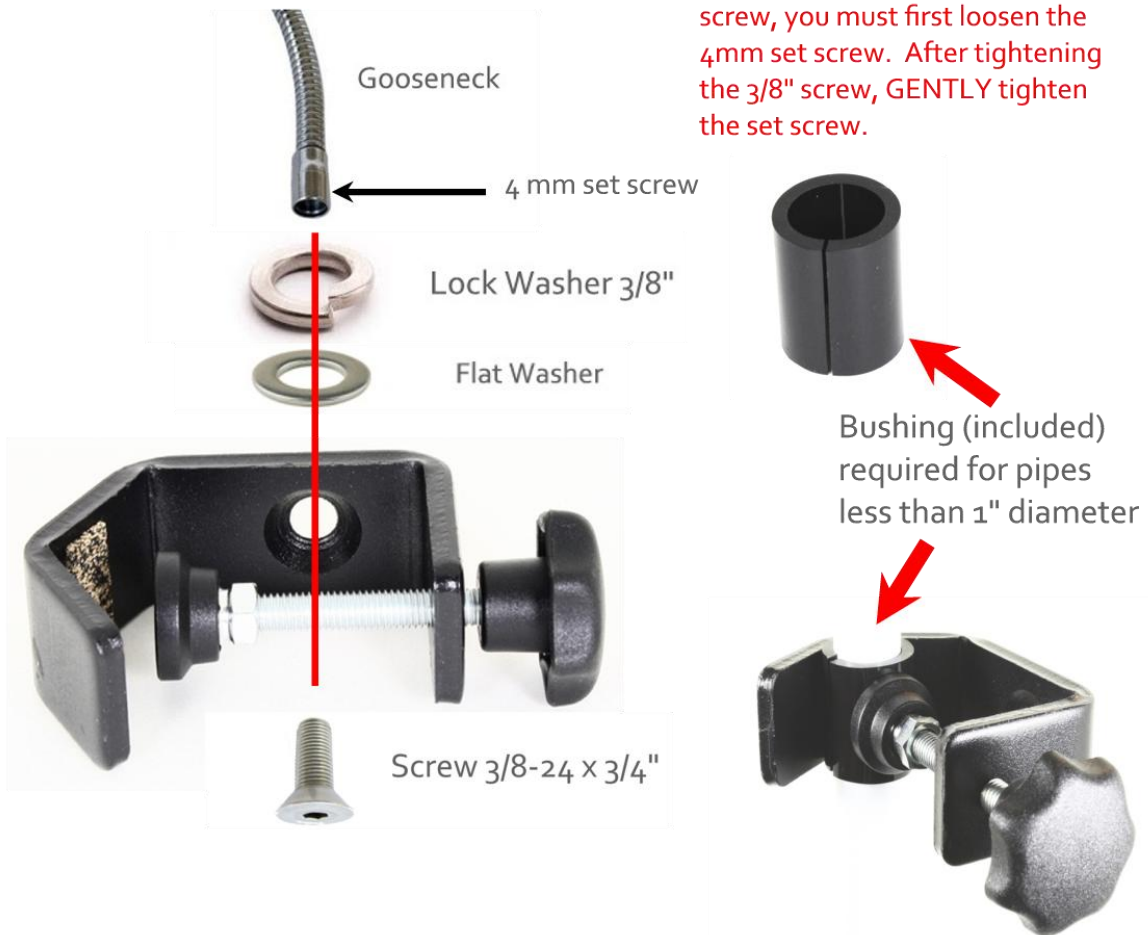


How To Assemble Your Rail Clamp

TOOLS REQUIRED:
7/32" Allen wrench (included)
2mm Allen wrench (included)

Attach the gooseneck arm to the rail clamp using one 3/8" flat-head screw.
Insert lock washer and washer as shown. Use allen wrench to tighten.

NOTE: Prior to inserting the 3/8" screw, you must first loosen the 4mm set screw. After tightening the 3/8" screw, GENTLY tighten the set screw.



SnakeClamp Products

www.SnakeClamp.com support@snakeclamp.com

snakeclamp